



BORDER HEALTH NEWSLETTER

May 2024

NAU MAI, HAERE MAI - WELCOME!

Kia ora koutou katoa,

We hope everyone is keeping warm and dry with all the winter weather that has started throughout the country over the last few weeks!

Once again another very busy month, both for Public Health staff out in the field, and in the lab with further mosquitoes arriving from Shanghai, and exotic mosquitoes found at Nelson Port. Rest assured equipment and consumables will be provided for routine surveillance traps when required, yet please note we are holding some items and stock here at the lab to enable response requirements to be directed to where needed most.

Mosquito numbers for this month are below, along with a special bite of humour created by the lab to reflect their thoughts on the *Culex pipiens* complex, which has been the focus of the recent interceptions. As always, we very much appreciate everyone's efforts and support!

Happy reading!

SURVEILLANCE

During May a total of 3337 routine surveillance, enhanced surveillance, and various survey samples were collected by staff from 12 PHUs. The samples included 325 positive larval samples and 153 positive adult samples, leading to a total of 6266 larvae and 233 adults identified over the past month (Table 1).

Table 1. Adult and larvae sampled by the New Zealand surveillance program during May 2023 & 2024

Species (common name)	Adults		Larvae	
	May 24	May 23	May 24	May 23
<i>Aedes antipodeus</i> (winter mosquito)	-	1	-	89
<i>Ae notoscriptus</i> (striped mosquito)	38	7	2001	1490
<i>Culex asteliae</i> (no common name)	-	-	-	3
<i>Cx pervigilans</i> (vigilant mosquito)	6	9	660	313
<i>Cx quinquefasciatus</i> (southern house mosquito)	180	141	3571	767
<i>Culex</i> sp.	8	4	-	-
<i>Opifex fuscus</i> (rock pool mosquito)	1	-	34	55
Total	233	162	6266	2717

Culex quinquefasciatus is the dominant larval species this month, which is the same as the previous month and different from this month last year with *Aedes notoscriptus* being the dominant species this month last year (Table 1). The high numbers of *Culex quinquefasciatus* larvae recorded this month are likely related to the sampling currently occurring in sumps for the different enhanced surveillance activities.



BORDER HEALTH NEWSLETTER

Compared to this same month last year, the total number of larvae and adults has shown an increase (131% and 44% respectively) (Table 1).

Compared to the previous month, the total number of larvae has shown an increase (14%) and the number of adults has shown a decrease (57%).

The highest number of larvae sampled this month was obtained in Auckland (1796 larvae) followed by Northland (1740 larvae) and Nelson Marlborough (1724 larvae).

In total, four mosquito species have been collected this month (Table 1), the same number collected last month.

INCURSIONS AND INTERCEPTIONS

During May, HPOs responded to three suspected interceptions, including, one of unwanted mosquito species (shown in red), one exotic (shown in blue), and one mosquito of local origin (Table 2).

During the month of May, Northern Region – Auckland have also continued to respond to mosquitoes collected in air cans at Auckland International Airport, with a total of 53 samples collected, resulting in 78 *Culex pipiens molestus/pallens* and 3 *Culex quinquefasciatus*.

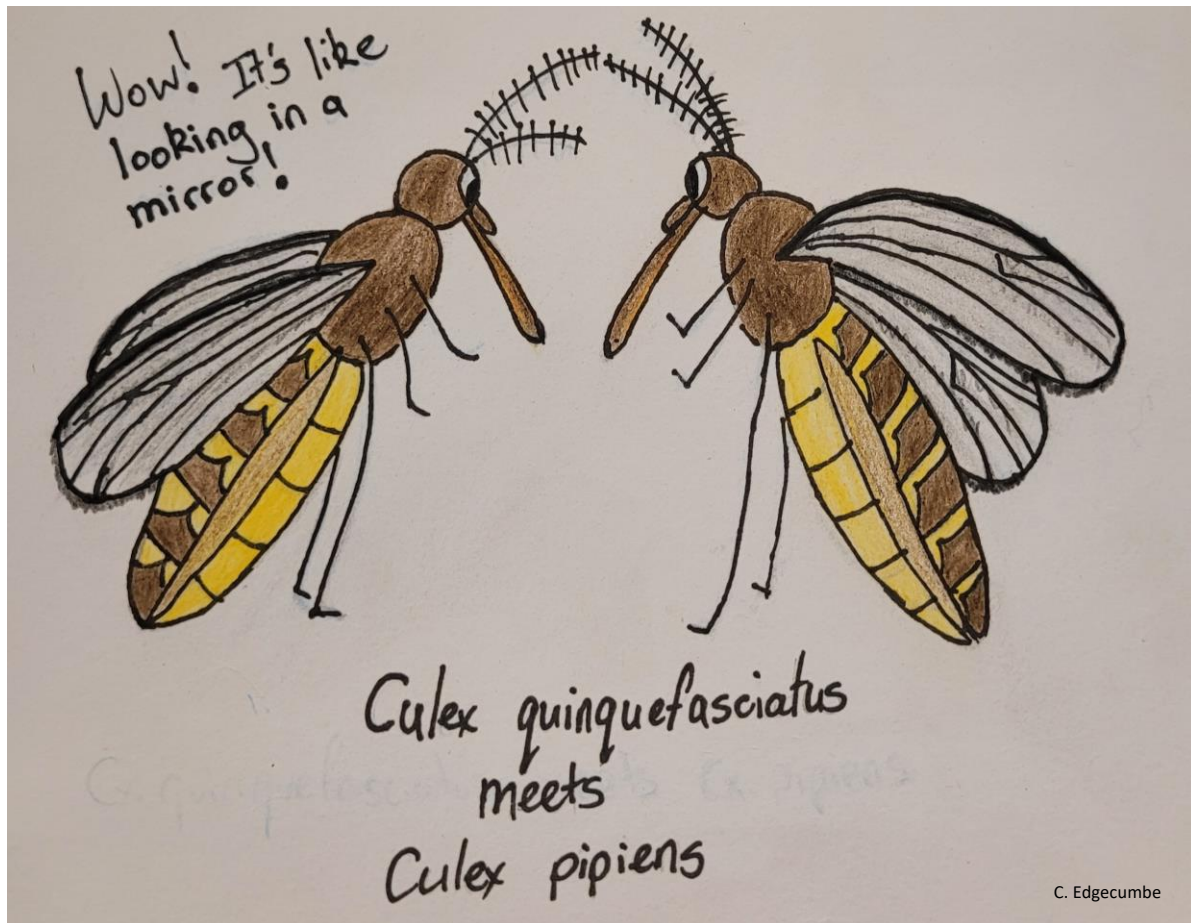
Table 2. Suspected interception during May 2024

Date	Species	Location	Circumstances
02.05.2024	1 female <i>Culex pipiens pallens/molestus</i>	Nelson Port	Found in routine surveillance trap. Enhanced surveillance is ongoing following this finding.
02.05.2024	1 female <i>Culiseta sp.</i>	Ports of Auckland Ltd	Found dead on a fumigated tractor at the Ports of Auckland.
16.05.2024	1 female <i>Aedes notoscriptus</i>	Auckland City	Caught by a member of the public when it flew from their luggage following their return from Hong Kong.



BORDER HEALTH NEWSLETTER

BITE OF HUMOUR



RISK MAPS

[Dengue Map](#) – Centres for Disease Control and Prevention

[Zika Map](#) – Centres for Disease Control and Prevention

[Malaria](#) – Centres for Disease Control and Prevention

[Malaria](#) – World Health Organisation

DISEASE OUTBREAKS

To find out where the latest disease outbreaks have occurred visit:

[Epidemic and emerging disease alerts in the Pacific region](#) - Produced by the Pacific Community (SPC) for the Pacific Public Health Surveillance Network (PPHSN).

[Disease Outbreak News](#) - World Health Organization.

[Public Health Surveillance](#) - Institute of Environmental Science and Research (ESR) - Information for New Zealand Public Health Action.

[Communicable disease threats report](#) - European Centre for Disease Prevention and Control

Biosecurity Specialists